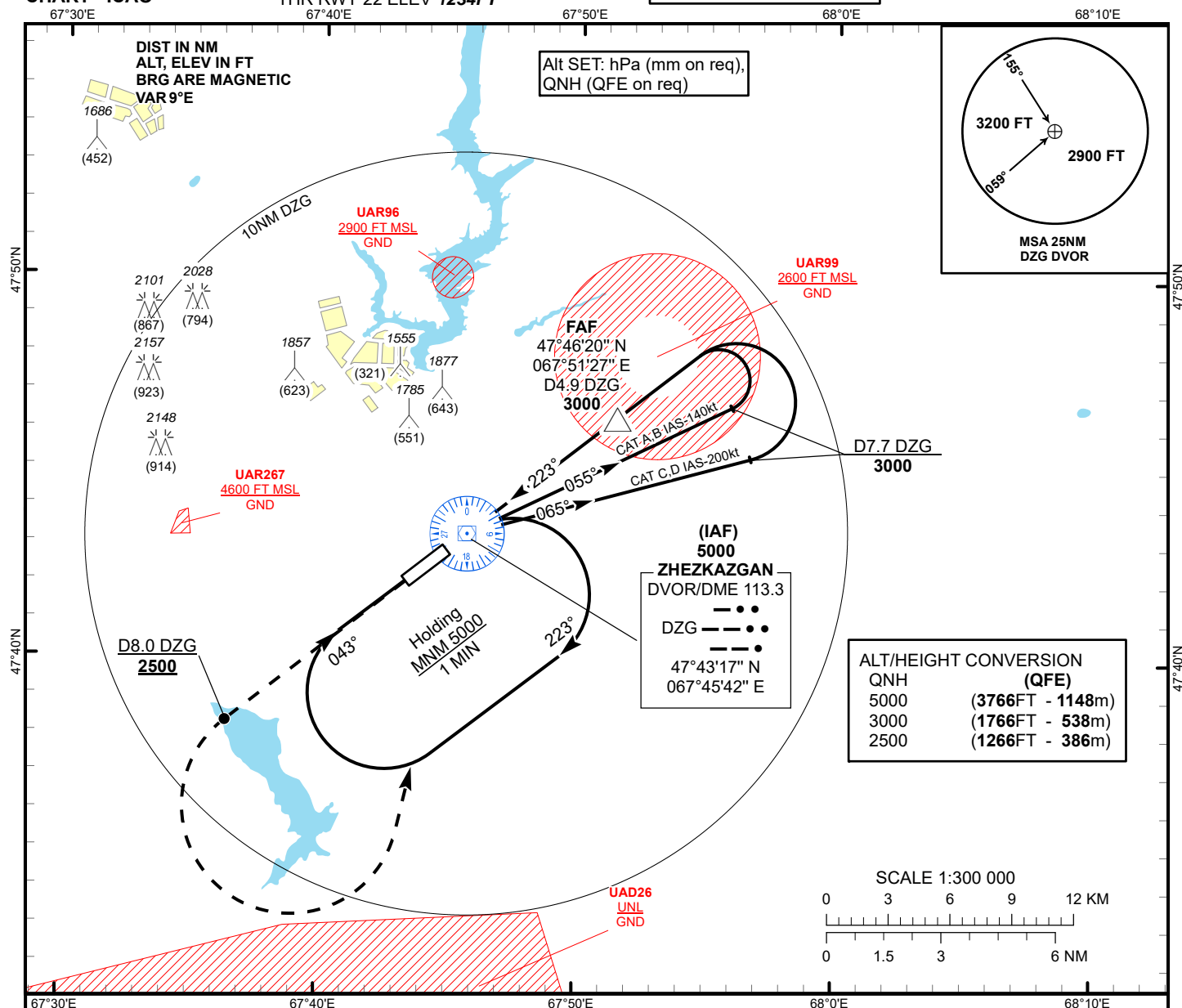


AERODROME ELEV **1251FT**  
HEIGHTS RELATED TO  
THR RWY 22 ELEV **1234FT**

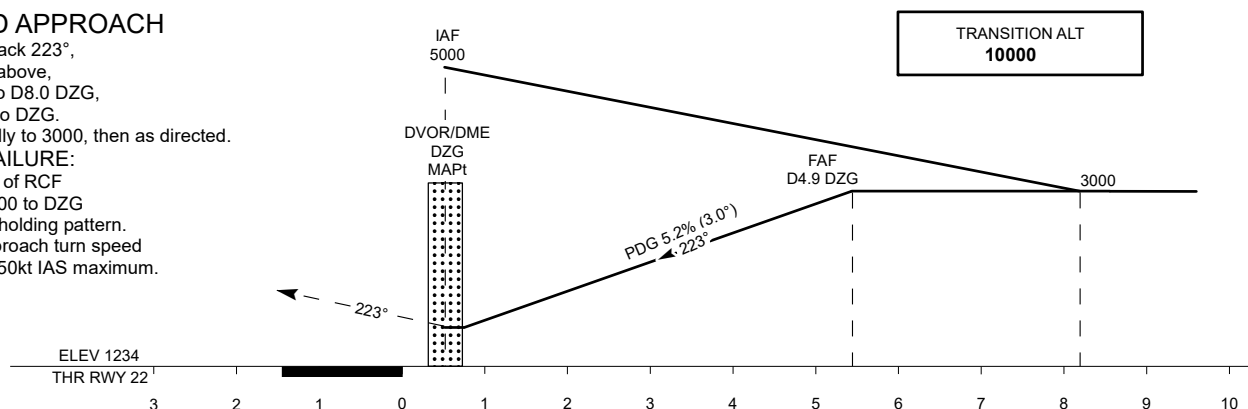
ZHEZKAZGAN TOWER 127.1  
ZHEZKAZGAN ATIS (EN) 131.4  
ZHEZKAZGAN ATIS (RU) 122.4

**ZHEZKAZGAN  
VOR/DME Z  
RWY 22**



Climb on track 223°,  
at 2500 or above,  
outbound to D8.0 DZG,  
turn LEFT to DZG.  
Climb initially to 3000, then as directed.

In the case of RCF  
climb to 5000 to DZG  
and join to holding pattern.  
Missed approach turn speed  
limited to 250kt IAS maximum.



Aircraft Category		A	B	C	D	DIST THR	5.4	5	4	3	2	1
Straight-in Approach OCA/H						DME DZG	4.9	4.5	3.5	2.5	1.5	0.5
	VOR/DME	1500(270)	1500(270)	1500(270)	1500(270)	ALTITUDE	3000	2875	2577	2238	1920	1601
						HEIGHT	1766	1641	1323	1004	686	367

Aerodrome Operating Minima MDH ft x RVR(CMV)	VOR/DME												
						GS	Kt	80	100	120	140	160	180
						FAF-MAPT 4.9NM	min:sec	3:40	2:56	2:27	2:06	1:50	1:38
						Rate of descent(5.2%)	ft/min	420	530	640	740	850	960

ZHEZKAZGAN  
VOR/DME Z

AERONAUTICAL DATA TABULATION

VOR approach to RWY22 from DVOR/DME DZG	
Fix/point	Coordinates
(IAF) DVOR/DME DZG	47° 43' 17.1"N 067° 45' 41.7"E
(FAF) D4.9 DZG	47° 46' 20.1"N 067° 51' 27.1"E
THR RWY 22	47° 42' 58.68"N 067° 45' 07.14"E
Final approach descent angle is 3°	